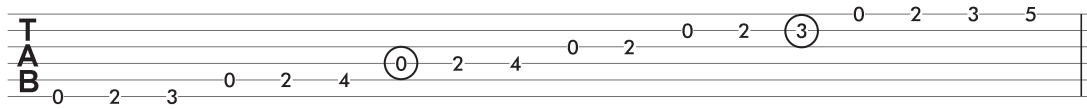
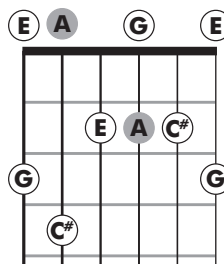
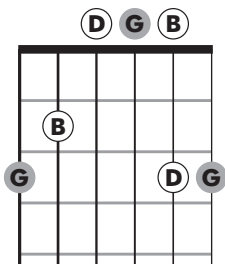
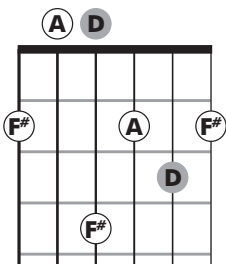


1) The key signature for D major has 2 sharps: F# and C#.



2) Below the table you see diagrams of the D, G and A7 arpeggios in open position.

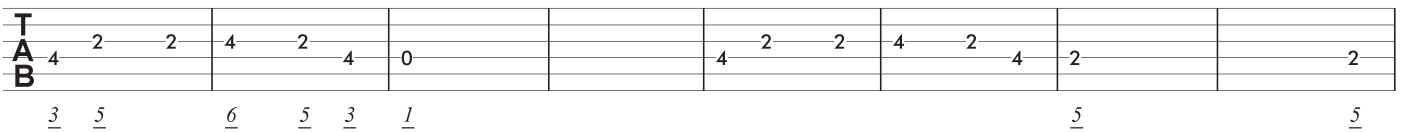
Chord	Chord Degree	Root	3rd	5th	7th
D	I	D	F#	A	
G	IV	G	B	D	
A7	V	A	C#	E	G



3)

D

A7



D

G

A7

D

