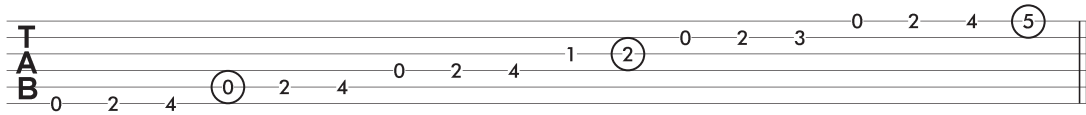


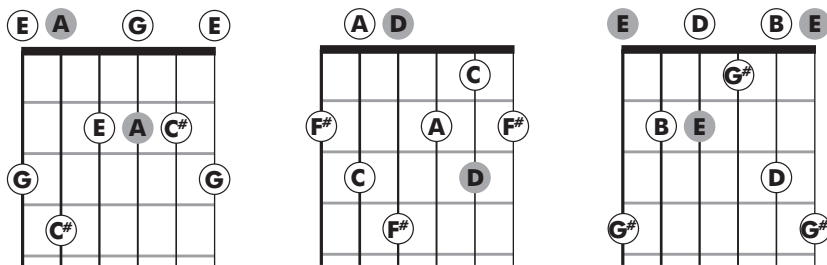
# Theory Exercise Answers

1) The key signature for A major has 3 sharps: F#, C#, G#



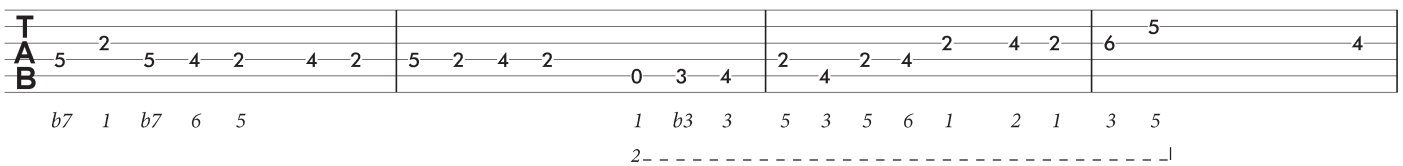
2) Below the table you see diagrams of A7, D7 and E7 arpeggios in open position.

Chord	Chord Degree	Root	3rd	5th	7th
A7	I7	A	C#	E	G
D7	IV7	D	F#	A	C
E7	V7	E	G#	B	D

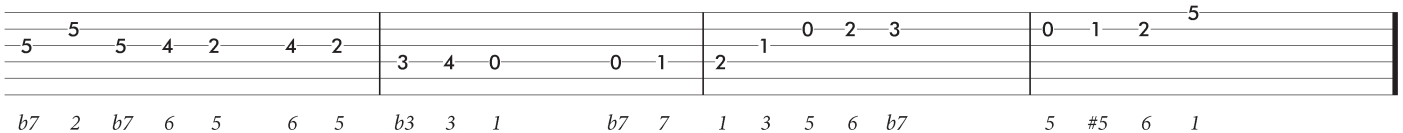


3) Notice the prominence of the 5-6-b7 figure in this solo as well as the song's melody. Phrase 2 is largely derived from the major pentatonic scale (the one exception being the b3). For more on the major pentatonic scale see the Resource Sheet devoted to it at [commuityguitar.com](http://commuityguitar.com).

## A7

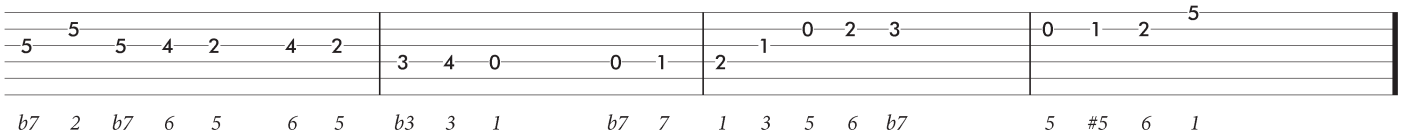


## D7



## E7

## A7



This last phrase is perhaps better understood relative to the A7 chord:  
2 - b3 - 3 - 1